



UNIVERSITY COLLEGE TATI (UCTATI)

FINAL EXAMINATION QUESTION BOOKLET

| | |
|------------------|---------------------------|
| COURSE CODE | : BME 3073 |
| COURSE | : ADVANCED CAD & MODELING |
| SEMESTER/SESSION | : 1-2023/2024 |
| DURATION | : 3 HOURS |

Instructions:

1. This booklet contains **2** sections. Answer **ALL** questions.
2. All answers should be drawn in **INVENTOR software**.
3. Save your drawing files in to the created folder **20B0XXXX_FINAL BME3073_ADV CAD MODELING_NAME** (20B0XXXX is your matrix number).
4. Send your folder/file to the email address given below.
(syahrir@uctati.edu.my)

DO NOT OPEN THIS BOOKLET UNTIL YOU ARE TOLD TO DO SO

THIS BOOKLET CONTAINS 6 PRINTED PAGES INCLUDING COVER PAGE

INSTRUCTION: Submit your answer using EMAIL. Save your drawing as your Name and Metric No., for example, *A100XXXXX_FINALBME3073_HAIKAL BIN ISMAIL*

SECTION A:

Reproduce all the solid models of the following parts as shown in *Appendix A*:

All dimensions are in *millimeter*.

- | | |
|-----------------|------------|
| 1. Base Plate | (10 Marks) |
| 2. Geneva wheel | (20 Marks) |
| 3. Pin | (5 Marks) |
| 4. Key | (5 Marks) |
| 5. Rotor | (20 Marks) |
| 6. Button | (5 Marks) |

Note:

- Place all the files (.prt) in the folder that you renamed.
- You will be graded on the quality of the modelling process for all the solid models, i.e., **sketches made, part orientation, and the accuracy of the solid models.**

SECTION B:

Illustrate the **unexploded** and **exploded** 3D assembly models of the **Geneva Wheel** assembly from all the solids drawn earlier in section A, referring to **Appendix B**.

You will be graded on the quality of the final assembly 3D model based on these criteria:-

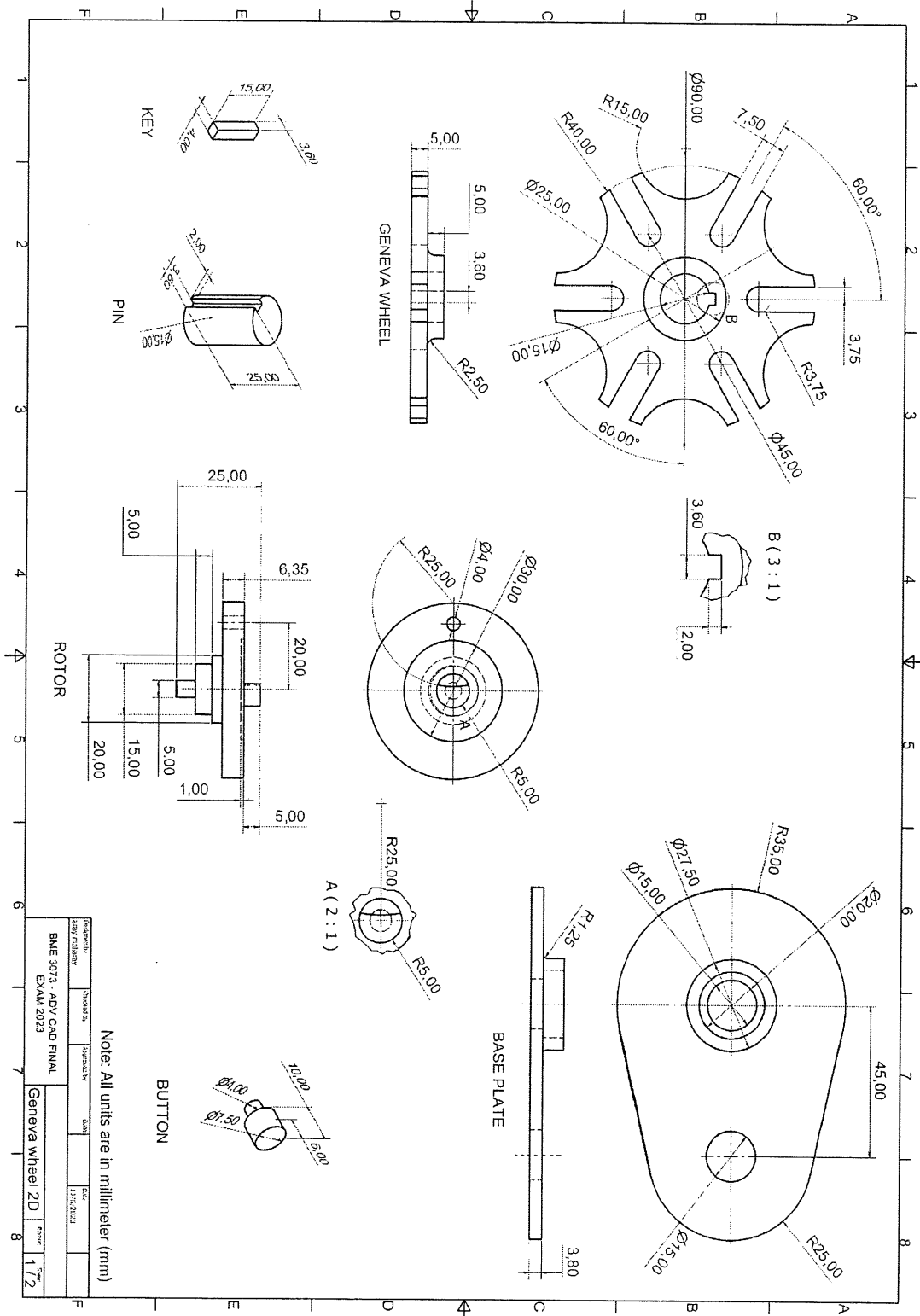
1. Number of constraints required (15 Marks)
2. Proper Orientation of unexploded 3D assembly (10 Marks)
3. Proper Orientation of exploded 3D assembly (10 Marks)

Note:

- Save the assembly file and picture files as (Geneva_assy.asm) and (Geneva_assy.jpg) in the same folder with the other solids model (.prt).

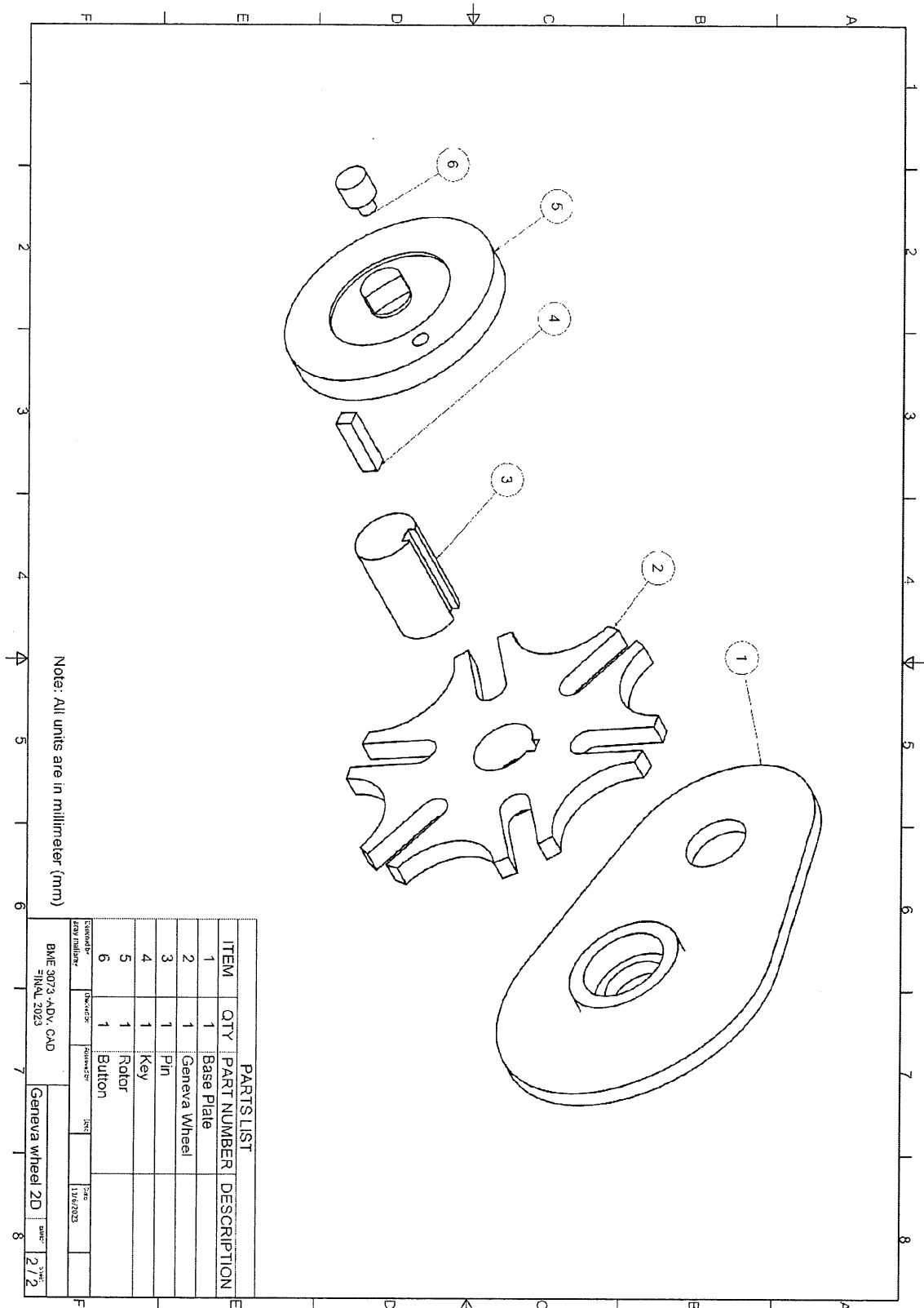
-----End of question-----

APPENDIX A



-----END OF QUESTION-----

APPENDIX B



RUBRIC

| Criteria | Marks |
|--|-------|
| All questions answered will be marked according to the answer schema | /100 |